



- PRECISION ENGINEERING PRODUCTS
- CNC MACHINED COMPONENTS
- IMPORT SUBSTITUTES

**QUALITY IS PRODUCED
NOT INSPECTED**



www.sepl-india.com

COMPANY OVERVIEW

Shivam Engimech Pvt. Ltd. (SEPL) is based at Ahmedabad, Gujarat, India. We are a leading Manufacturer and Exporter of '**Precision Machined Components & Engineering Products**' in India.

We are an **ISO 9001:2015 (German Accreditation) Certified Company** and have achieved land mark result in the development of **Import Substitutes** in the Engineering segment.

Since 2004, we are manufacturing and supplying our Quality Products to reputed **OEM's** and Clients coming from various sectors such as :

- Textile Machinery Manufacturers
- Plastic Machinery and Processing Units
- Automobiles Industries
- Power Generation Plants
- Pipe Manufacturers (L-SAW/ERW/SPIRAL)
- Paper & Rolling Mills
- Mines & Minerals Machinery
- Cement Plants and Construction Machinery
- Petrochemical & Fertilizer Plants
- Agricultural Machinery Parts

QUALITY

The business philosophy of our organization is to understand the needs and wants of our valued Customers and accordingly manufacturing the **customized products**. We have been an established and reputed **OEM's** approved Company with an excellent track record for the best Customer satisfaction. We have never compromised on the Quality and the services provided to our valued Customers.





CREDENTIAL

We are an **ISO 9001:2015 (German Accreditation) Certified Company** and have internationally acclaimed **Dun & Bradstreet (D&B) Credit and Performance Rating**.

We are a member of many nationally and internationally recognized trade bodies and management associations which gives us an added advantage of being reliable, recognized and above all, trustworthy to do business with.

- **EEPC INDIA** (Engineering Export Promotion Council)
– Government of India
- **The National Small Industries Corporation Ltd. (NSIC)**
– Government of India
- **Gujarat Chamber of Commerce & Industry (GCCI)**

INFRASTRUCTURE

We owe our success to our infrastructure that meets the exacting requirements & standards of the industry. Our extensive research capabilities coupled with staff members who possess rich experience in their sphere of operations help us in comprehending our clients' requirements.

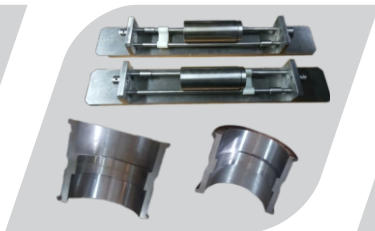
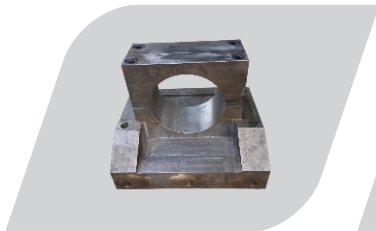
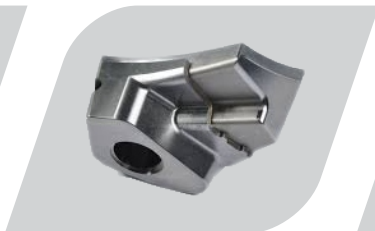
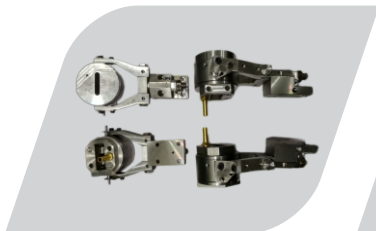
OUR WORKFORCE

Our organization is an efficient one, which comprises of a dedicated team of professional personnel's in all areas of management. The project, planning and control departments are headed by senior technocrats, who have an experience of more than two decades.



PRODUCT RANGE

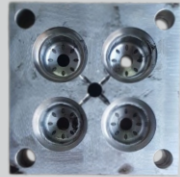
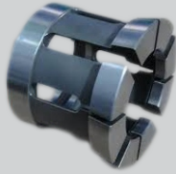
PRECISION MACHINED COMPONENTS



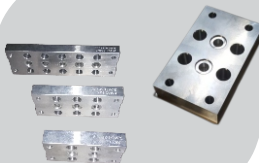
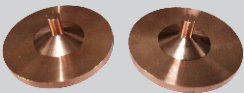
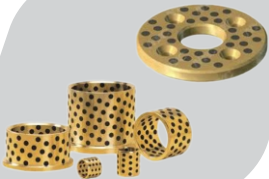
CNC TURNED PARTS



CNC MILLED PARTS



NON FERROUS PARTS



PLASTIC POLYMERS PARTS



EDM WIRE CUT MACHINED PARTS



OUR VALUABLE CLIENTS



SHIVAM ENGIMECH PVT. LTD.

Registered Office & Unit - I

1 & 2, Prathana Ind. Estate, Plot-52,
B/h. Odhav Fire Station,
G.I.D.C., Odhav,
Ahmedabad - 382 415,
Gujarat,
INDIA

CIN : U29100GJ2011PTC064814

+91-75758 05879

✉ info@sepl-india.com

🌐 www.sepl-india.com



Unit - II

37, Shrinathji Ind. Estate,
Nikol Ring Road Chokadi,
Opp. Kathwada GIDC, Nikol,
Ahmedabad - 382 415
Gujarat,
INDIA

